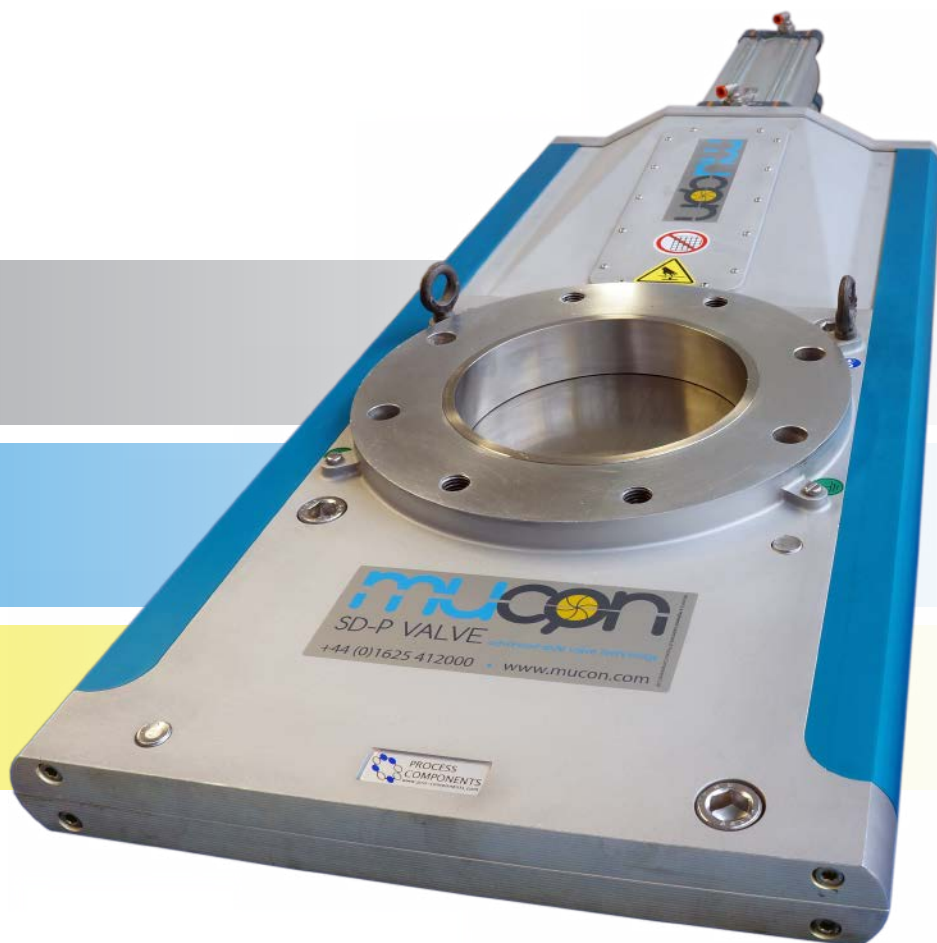


Slide Valves

Slide Valves

Slide Valves



Introduction

Process Components Ltd is the only manufacturer and supplier of the Mucon product range to the liquid, powder and bulk solids handling sectors.

- Iris Valves – The Original Mucon Valve
- Slide Valves
- Butterfly Valves
- Disc Valves
- Discharge Aids
- Level Indicators

The Industry sectors we supply include;

- Food Processing
- Pharmaceutical
- Chemical Processing
- Glass and Ceramics
- Plastics
- Sand and Cement



Brands

Process Components Ltd own the intellectual property for the manufacture of spare parts for the following brands;

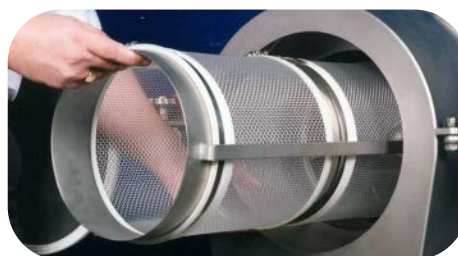
- KEK – Centrifugal Sifters, Universal Mills, Cone Mills
- Gardner – Blenders and Mixers
- PPS – Air Classifier Mills

Process Components guarantee exceptionally high levels of service and product quality, which you would expect from a genuine spare parts manufacturer.



After Sales and Service

- Full on-site process machine servicing and maintenance
- On-Site inspection, repairs and testing
- Bespoke design service



The Mucon name has been synonymous with the flow control of bulk solids, since launching the first ever Iris Diaphragm Valve back in 1946.

However, in applications where flow control is not a key requirement, a more robust total shut-off solution can be more appropriate. Identifying this need, we set out to develop a range of innovative, yet cost effective, Slide Gate Valves; calling on our 60 years plus experience with valve technology and bulk solids handling, to ensure that we can continue to meet the needs of this demanding market.

SD-P In-line Pneumatic Operation

The Mucon SD-P Valve operates on the 'moving orifice' principle, ensuring a fully dust tight seal when closed and a completely uninterrupted product flow when open.

The slide gate blade is supported on two, low friction, highly resilient polymer sealing surfaces, which also scrape the blade clean when the valve is operated.

The polymer seals are uniformly pressed against the blade by a unique loading system, designed to ensure that an extremely low level of maintenance is required.



p4

SD-H In-line Handwheel Operation

With all the standard features of the SD-P pneumatic valve, the Mucon SD-H hand wheel provides a convenient Slide Gate Valve solution, where frequency of operation does not require a powered operator, or where compressed air is simply not available.

The simple 'rising shaft' operation utilises a custom made hand wheel, designed to provide ease of operation with the minimum possible number of rotations from open to close.



p6

SV Open Discharge

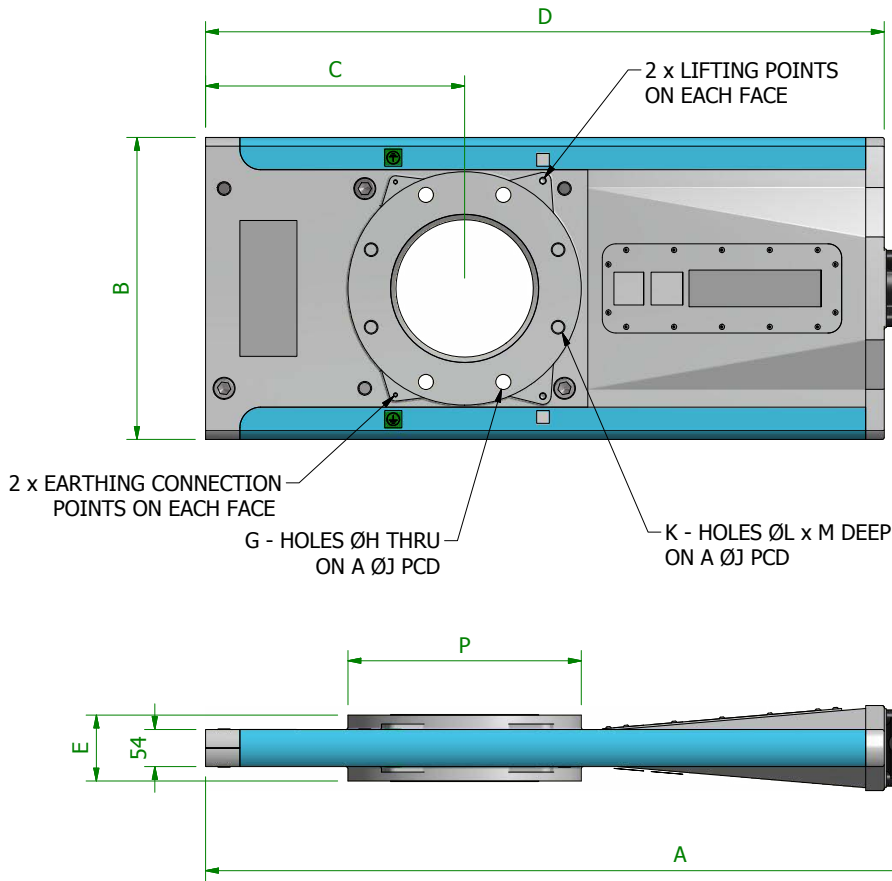
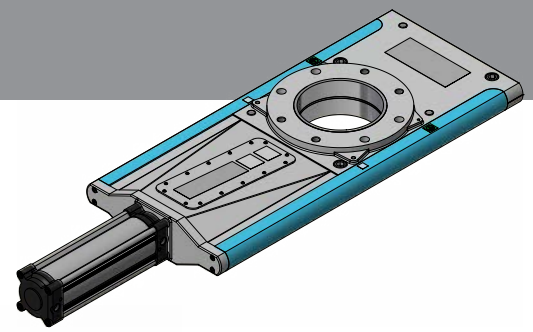
The Mucon Single Flanged Slide Valve provides the ideal solution for isolating and discharging intermediate bulk containers or other storage units requiring no onward connection.

The simple but feature rich Mucon Slide Valve is manufactured to our high standards and is available from stock in sizes 150mm, 200mm and 300mm.



p7

SD-P In-line Pneumatic Operation Valve



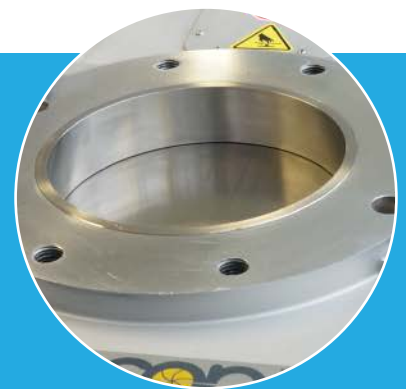
Air supply	Dry, filtered compressed air, lubricated or non-lubricated		
Pressure	6 - 10 barg (85 - 145 psi)		
Valve Type	Nom Bore mm	Inch	Cylinder Port BSP
SD04-P	100	4"	1/4"
SD06-P	150	6"	3/8"
SD08-P	200	8"	1/2"
SD10-P	250	10"	1/2"

Valve Type	Nom Bore		Body Dimensions							Flange PN10						Flange ANSI 150						WEIGHT (Kg)		
	mm	Inch	A	B	C	D	E	F	N	G	H	J	K	L	M	P	G	H	J	K	L		M	P
SD04-P	100	4"	939	340	214	664	97	108	94	4	18	180	4	M16 x 2	28	228	4	18	190.5	4	M16 x 2	28	228	24.1
SD06-P	150	6"	1174	390	302	839	97	108	94	4	22	240	4	M20 x 2.5	28	285	4	22	241.5	4	M20 x 2.5	28	285	37.4
SD08-P	200	8"	1384	440	378	989	97	124	111	4	22	295	4	M20 x 2.5	28	340	4	22	298.4	4	M20 x 2.5	28	340	45.1
SD10-P	250	10"	1575	504	428	1130	97	148	111	4	22	350	8	M20 x 2.5	28	406	4	22	362.0	8	M20 x 2.5	28	406	60.5

Dimensions are in mm

Key Benefits

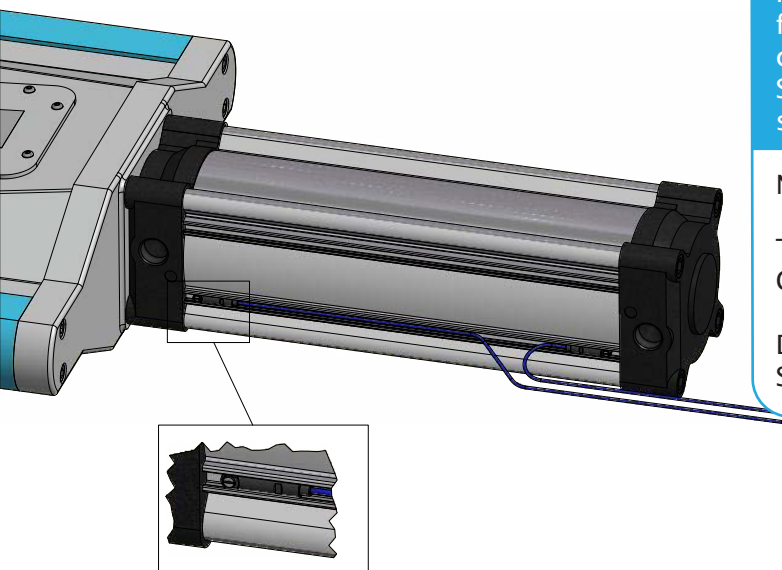
- Uninterrupted smooth bore when the valve is fully open
- Effective fully sealed closure
- Self cleaning slide gate blade
- Dust tight operation
- Extremely low maintenance
- Smooth, efficient operation
- Slim design



Main Features

- Powered by a low friction, high efficiency pneumatic cylinder
- Provision for 'earth' tags where there is potential for static electricity generation
- Lifting points provided at the valve centre of gravity
- Flange dimensions to DIN or ANSI patterns
- Rated for up to +1 barg conveying pressures
- ATEX certified to CE Ex 1D/2D categories

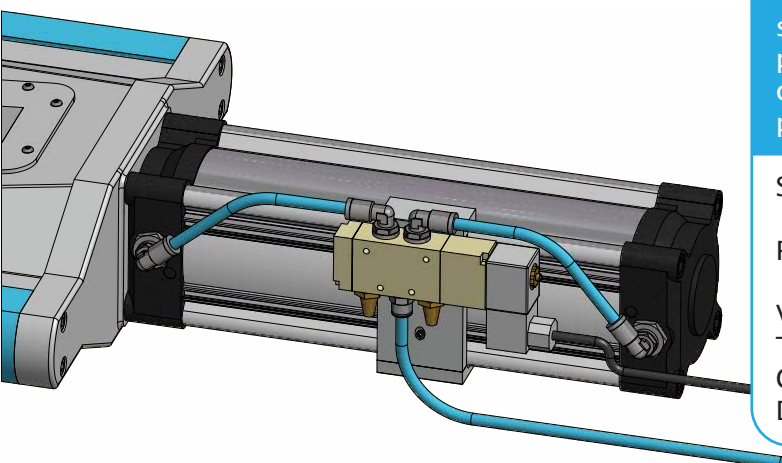
Open and Closed Switches



In most cases, an automated control system will require a feedback signal, identifying whether the valve is open or closed. To facilitate this requirement the cylinder of the SD-P valve can be fitted with open and closed indication switches, as shown below.

Nominal voltage: 8.2V (Use with barrier)
 Max values: U=15 V, I=50 mA, P=120 mW
 Temperature range: -25°C to +70°C
 Connection: 5m long PVC flying lead, 2 wires
 0.14mm² stripped ends
 Degree of protection: IP67
 Switch certification: CE, ATEX 1G/D, ATEX 3G/D

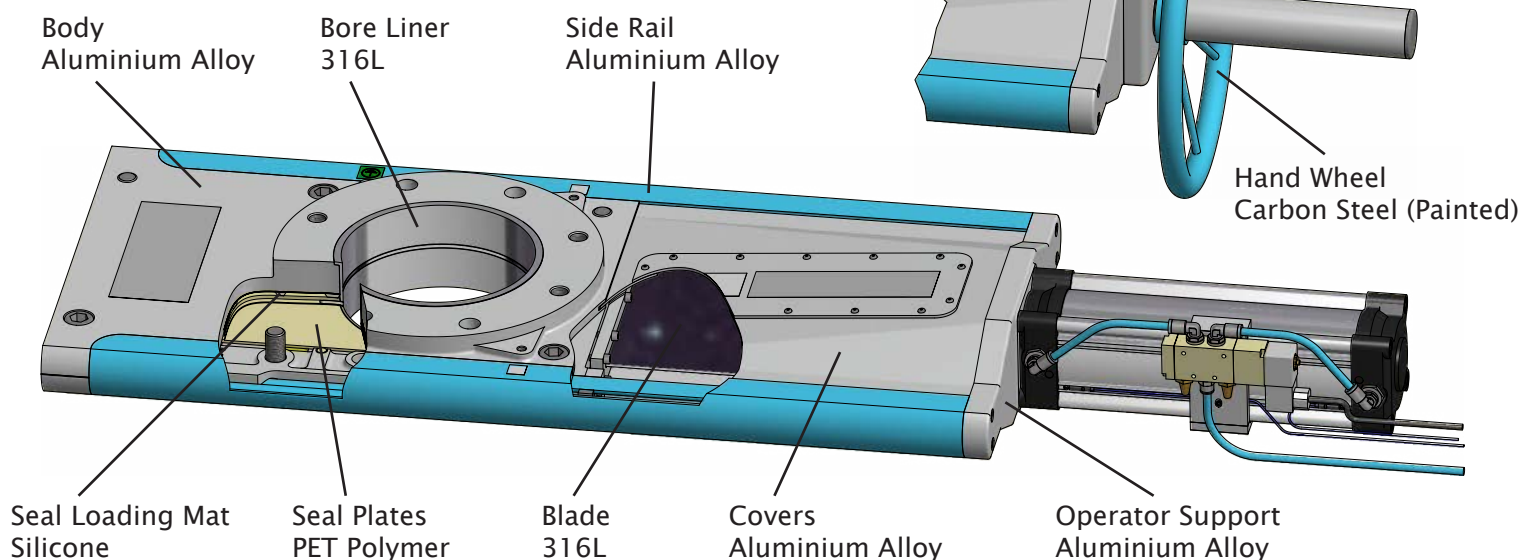
Solenoid Assembly



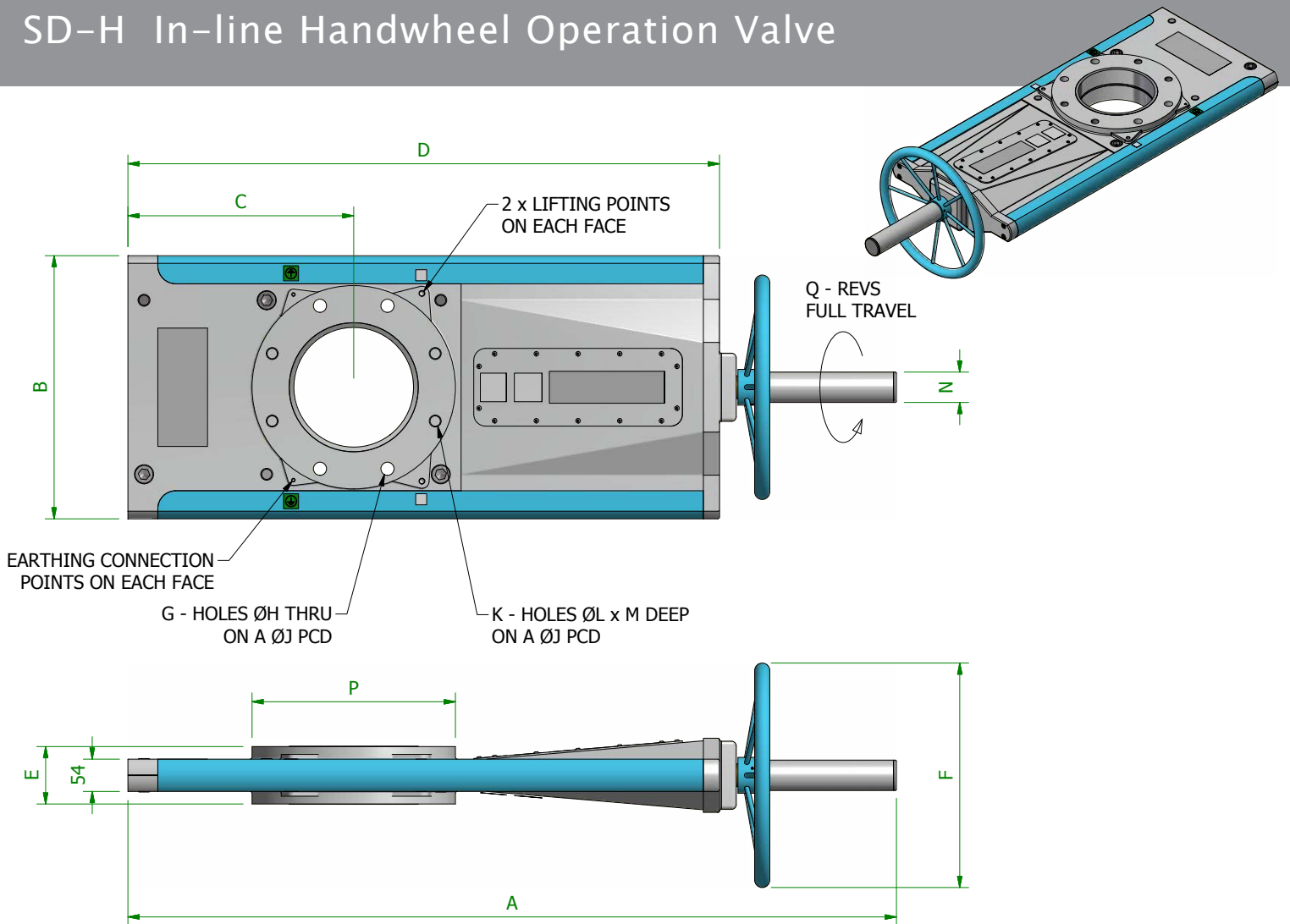
To simplify the installation of the SD-P valve into your system, we offer a simple open and closed solenoid control package that mounts directly onto the cylinder. Simply connect your compressed air feed to the push in fitting provided and wire the solenoid coil to your control system.

Standard voltages: 12 to 240 VAC - 50/60Hz
 6 to 48 VDC
 Rated power: 3.2 VA (50Hz), 2.7 VA (60Hz)
 3 W (DC)
 Voltage tolerance: ±10%
 Temperature range: -15°C to +50°C
 Coil certification: CE, EExm II T5 (100°C)
 Duty cycle: 100%

Standard Materials



SD-H In-line Handwheel Operation Valve



Valve Type	Nom Bore		Body Dimensions					Flange PN10						Flange ANSI 150						WEIGHT (Kg)					
	mm	Inch	A	B	C	D	E	F	G	H	J	K	L	M	P	G	H	J	K	L	M	P	Q	N	
SD04-H	100	4"	860	340	214	664	97	375	4	18	180	4	M16 x 2	28	228	4	18	190.5	4	M16 x 2	28	228	6	51	27.0
SD06-H	150	6"	1095	390	302	839	97	375	4	22	240	4	M20 x 2.5	28	285	4	22	241.5	4	M20 x 2.5	28	285	8	51	36.3
SD08-H	200	8"	1285	440	378	989	97	375	4	22	295	4	M20 x 2.5	28	340	4	22	298.4	4	M20 x 2.5	28	340	10	51	46.0
SD10-H	250	10"	1486	504	428	1130	97	375	4	22	350	8	M20 x 2.5	28	406	4	22	362.0	8	M20 x 2.5	28	406	11	51	56.9


Dimensions are in mm

Key Benefits

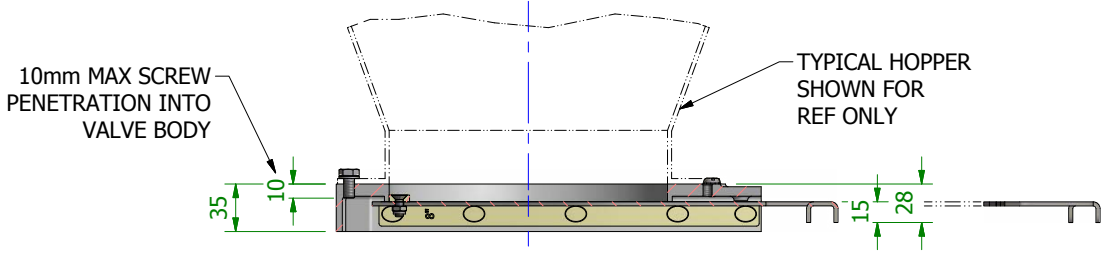
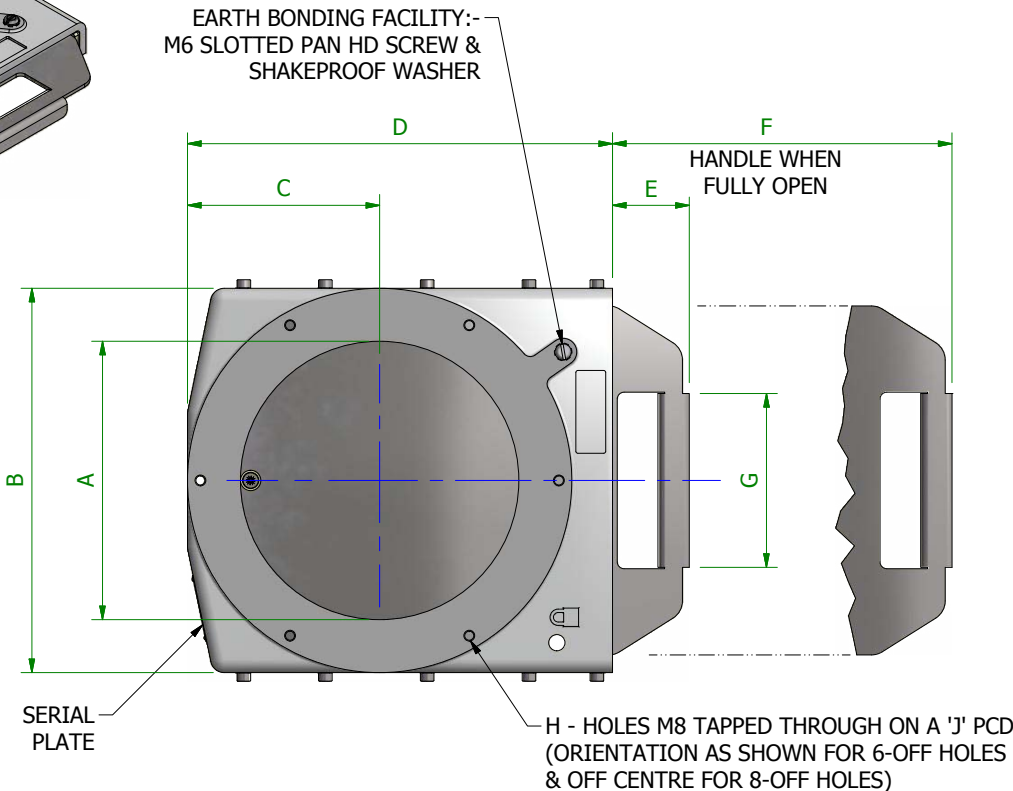
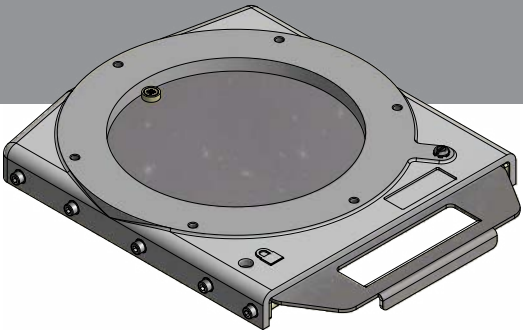
- Uninterrupted smooth bore when the valve is fully open
- Effective fully sealed closure
- Self cleaning slide gate blade
- Dust tight operation
- Extremely low maintenance
- Smooth, efficient operation
- Slim design



Main Features

- Operated by a multi-start drive screw via a large radius hand wheel
- Provision for 'earth' tags where there is potential for static electricity generation
- Lifting points provided at the valve centre of gravity
- Flange dimensions to DIN or ANSI patterns
- Rated for up to +1 barg conveying pressures
- ATEX certified to CE  1D/2D categories

SV Open Discharge Valve



Valve Type	Nom Bore		Body Dimensions							Flange		WEIGHT (Kg)
	mm	Inch	A	B	C	D	E	F	G	H	J	
SV06	150	6"	152	230	122	268	57	192	128	6	213	2.6
SV08	200	8"	206	283	142	313	57	248	128	6	264	3.7
SV12	300	12"	302	406	203	436	57	344	228	8	369	6.7

Dimensions are in mm

Main Features and Benefits

- Greater forces can be applied to the stainless steel stiffened handle compared to conventional plastic handles
- Slide plate runners are designed to withstand heavy loading
- Fully interchangeable with the equivalent size Mucon 'H' Valves
- All stainless steel slide plate, handle and fixings provide greater protection from corrosion
- Robust, all aluminium body



Lock Off Facility – Lock the valve in the closed position utilising Lockout Hasp, Padlock or Lockout tags



Earth Point Provision – Facilitates earth continuity in applications where there is potential for static generation



Process Components Ltd
Graphic House
Bank Street
Macclesfield
Cheshire
SK11 7AR
United Kingdom

T: +44 (0) 1625 412000
F: +44 (0) 1625 412001

sales@mucon.com
www.mucon.com

Mucon is a registered trademark of Process Components Ltd