

COUNTING EQUIPMENT

WORLDWIDE LEADER IN TABLET AND CAPSULE COUNTING



Worldwide leader in tablet and capsule counting lines

IMA WORLD LEADER	2
ABOUT IMA ORGANIZATION	4
WORLD CLASS MANUFACTURER OF PACKAGING SYSTEMS	6
THE RANGE OF SOLUTIONS	8
SLAT COUNTERS	10
ELECTRONIC COUNTERS	16
VISION COUNTERS	22
COMPLETE SOLUTIONS	24
MACHINES FOR COMPLETE LINE SET-UP	26
IMA TECHNICAL ASSISTANCE	30
TRAINING COURSES	31
CONTACTS	32

IMA WORLD LEADER

IMA: world leader in the design and manufacture of automatic process and packaging machinery for the pharmaceutical, nutraceutical, cosmetic, tea and coffee industries; also has the widest range of solutions for tablet and capsule counting, mainly for the pharmaceutical sector. Every time a new product is launched on the market, the question is the same: blister or bottle? We all know that the choice is made by evaluating a number of factors: required degree of protection, type of active ingredient, markets in which the product is distributed, characteristics of end users, to name but a few.

Pharmaceuticals, nutraceuticals, vitamins and confectionary need to be dosed into containers for sale. The dose can be carried out using a variety of technologies, and counting is safest and most precise method for guaranteeing that the exact quantity of product is filled into the bottles, ensuring maximum customer satisfaction and the best return on investment.

IMA'S OBJECTIVE IS TO GIVE ITS CUSTOMERS THE POSSIBILITY OF CHOOSING FROM THE MOST EXTENSIVE RANGE OF CONTAINERS SUITABLE FOR MEETING THEIR REQUIREMENTS, AS ALREADY HAPPENS WITH THE RANGE OF BLISTER PACKAGING MACHINES AVAILABLE AT IMA.

IMA IS THE ONLY COMPANY CAPABLE OF SUPPLYING SUCH A VAST RANGE OF PRODUCTS AND SOLUTIONS FOR TABLET AND CAPSULE COUNTING. THIS IS POSSIBLE THANKS TO THE EXPERIENCE IT HAS GAINED FROM A VARIETY OF COMPANIES THAT HAVE A LONG HISTORY IN TABLET AND CAPSULE COUNTING THAT, GROUPED INTO A DEDICATED STRUCTURE, ARE AT YOUR DISPOSAL TO PROVIDE CUSTOMISED SOLUTIONS ON THE BASIS OF THE REQUIREMENTS OF INDIVIDUAL PROJECTS.





WHAT WE ASK FROM OUR CUSTOMERS

INFORMATION REGARDING:

- REQUIRED PRODUCTION SPEED
- TYPE OF NECESSARY CHECK: ONLY PRESENCE CONTROL, SHAPE CONTROL, COLOUR CONTROL
- BOTTLE COUNTS
- DIMENSION OF THE PRODUCTS AND BOTTLES
- PACKAGING CHARACTERISTICS TO DETERMINE THE MACHINES REQUIRED TO MAKE UP THE LINE.

WHAT WE GUARANTEE OUR CUSTOMERS

- COUNTING ACCURACY
- REPEATABLE RESULTS
- SIGNIFICANT ATTENTION TO COSMETIC DEFECTS
- HIGH LEVEL OF PRODUCTION EFFICIENCY
- RELIABILITY
- QUALITY SUPPLY
- PRICE SUITED TO REQUIRED LINE CHARACTERISTICS
- ENGINEERING, INTEGRATION, INSTALLATION, STARTUP AND TECHNICAL SUPPORT SERVICES
- GUARANTEE OF EXPECTED RESULTS AND DEFINITE RETURN ON INVESTMENT
- CUSTOMER PARTNERSHIP.



ABOUT IMA ORGANIZATION



IMA: OVER 40 YEARS OF INNOVATION

Founded in 1961, IMA is world leader in the design and manufacture of automatic machinery for the process and packaging of pharmaceutical products and tea in filter bags. Constantly growing since its inception, over 92% of its turnover now comes from exports. IMA accounts for about 83% of sales in the pharmaceutical sector. The Group has more than 3,000 employees, 1,400 of which are outside Italy, and is present in over 70 countries, supported by a sales network comprising branches and agencies.

Always attentive to customer requirements, in 2003 IMA set up a new project arising from the need to recognise the colour

of products as they are counted into the bottle to avoid cross-contamination which for certain products can be highly dangerous for patients. To cater to this requirement, IMA made use of the experience gained over the years designing and manufacturing blister packaging machines and, specifically, high efficiency filling devices even for particularly awkward products due to their shape and surface, to develop a new concept of counter, "Conta".

The Conta is the very first and only counter in the world to use a high-resolution camera system to recognise the product by analysing its colour, area, perimeter and length.

This system means the product quality control level is on a par with that obtained in blister packaging machines, which are now always supplied with the high-resolution camera system operated filling check. This revolutionary system also was introduced with the capability to reject single non-conforming products before being dispensed into the container.



ABOUT IMA NORTH AMERICA INC.

In 2004 IMA acquired Nova Packaging Systems for its tablet counting and line integration expertise under the Lakso, Merrill and Kalish brands. In 2010 Nova Packaging Systems was renamed as IMA North America Inc.

Today, IMA North America is the global leader in tablet counting and related equipment. IMA North America produces a wide range of slat counters, cottoners, unscramblers, liquid fillers and related equipment. IMA North America also has a long history of integrating packaging lines, and with its experienced staff of engineers, project managers and technicians is able to supply complete customized systems to meet every need.



ABOUT IMA SWIFTPACK

Swiftpack Automation Ltd was established in 1985 as a manufacturer of counting machines. The introduction of its first 'GMP' multi-track linear counter for Pharma applications, enabled rapid growth and by 1990 Swiftpack had over 50 systems installed within the UK. Over the following years through extensive R&D, Swiftpack extended its product range enabling the company to evolve as a line integrator which provided rapid growth and valuable experience. With the acquisition of C.E. King in 1999, the capabilities were further expanded to include slat counters, liquid fillers, cappers, cottoners and labellers. In the last five years, IMA Swiftpack has manufactured 300 Production counters and 500 Laboratory counters. Today Swiftpack is an ISO9001 certified company that has established itself as the world leader in the manufacture of electronic tablet and capsule counting to the pharmaceutical industry with many installations in 120 countries.

WORLD CLASS MANUFACTURER OF PACKAGING SYSTEMS

TO GUARANTEE THESE OBJECTIVES ARE ACHIEVED,
WE PUT THE FOLLOWING AT YOUR DISPOSAL:

- EXPERIENCE GAINED OVER MANY YEARS OF MANUFACTURING COUNTERS RUNNING A WIDE VARIETY OF PRODUCT SHAPES AND SIZES
- EXTENSIVE DESIGN CAPACITY THAT EXPLOITS THE EXPERIENCE GAINED IN OTHER IMA SECTORS
- HIGH LEVEL OF MACHINE OUTPUT QUALITY
- ONGOING DIALOGUE WITH CUSTOMERS TO CONSTANTLY IMPROVE OUR PRODUCTS AND SERVICES
- CONTINUALLY UPDATED PRODUCTS
- CONTINUOUS R&D INVESTMENT TO ENSURE INNOVATIVE SOLUTIONS
- R&D INVESTMENT TO MAKE SOLUTIONS EVER SMARTER
- WORLDWIDE SALES NETWORK
- WORLDWIDE TECHNICAL SUPPORT NETWORK
- PRODUCT TESTING TO DETERMINE BEST SOLUTIONS.

OUR CUSTOMERS' SUCCESS ALSO DEPENDS ON OUR ABILITY TO SUPPLY SOLUTIONS THAT CAN ENSURE:

- GENTLE FEEDING OF THE PRODUCT
- OPERATOR FRIENDLY
- REDUCED CHANGEOVER AND CLEANING TIME
- HIGH PRODUCTION EFFICIENCY
- EASY ACCESSIBILITY
- EASY VALIDATION
- CONFORMITY TO GMP, CE, CSA AND UL GUIDELINES.



IMA MACHINES ARE DESIGNED IN ACCORDANCE WITH cGMP AND FDA REGULATIONS ESPECIALLY REGARDING:

- SELECTION AND CERTIFICATION OF MATERIALS IN CONTACT WITH PRODUCT
- DESIGN AND MANUFACTURE OF OPERATOR SAFETIES THAT ALLOW EASY ACCESS FOR CLEANING, PRODUCTION CHANGEOVER AND SIZE CHANGEOVER.



THE RANGE OF SOLUTIONS WE PROVIDE INCLUDES:

SLAT COUNTERS

HYBRID 72-39	UP TO 400 BOTTLES/MINUTE 40,000 PRODUCTS/MINUTE
SL 16	UP TO 180 BOTTLES/MINUTE 18,000 PRODUCTS/MINUTE
SL 39	UP TO 400 BOTTLES/MINUTE 40,000 PRODUCTS/MINUTE

ELECTRONIC COUNTERS

SWIFTVISION	SPEED SINGLE HEAD UP TO 60 BOTTLES/MINUTE 6,000 PRODUCTS/MINUTE
SWIFTVISION	SPEED TWIN HEAD UP TO 120 BOTTLES/MINUTE 12,000 PRODUCTS/MINUTE
MONOPHARM	UP TO 50 BOTTLES/MINUTE 5,000 PRODUCTS/MINUTE
SWIFTPHARM	SPEED SINGLE HEAD UP TO 120 BOTTLES/MINUTE 12,000 PRODUCTS/MINUTE
SWIFTPHARM	SPEED TWIN HEAD UP TO 240 BOTTLES/MINUTE 24,000 PRODUCTS/MINUTE
UNILINE	UP TO 150 BOTTLES/MINUTE 12,000 PRODUCTS/MINUTE

VISION COUNTERS

CONTA 150	UP TO 150 BOTTLES/MINUTE 6,000 PRODUCTS/MINUTE
CONTA 300	UP TO 300 BOTTLES/MINUTE 12,000 PRODUCTS/MINUTE



THE IMA NORTH AMERICA SLAT FILLERS ARE BEST SUITED FOR HIGH SPEED FILLING REQUIREMENTS, CAN ACCURATELY COUNT ALL SHAPES AND SIZES OF TABLETS, DRAGEES, SOFT AND HARD GELATIN CAPSULES WHILE GENTLY HANDLING PRODUCTS AS THEY ARE CRADLED IN THE SLAT CAVITIES.



THE ELECTRONIC SWIFTPACK COUNTING MACHINES¹ ARE THE FIRST CHOICE FOR THE PHARMACEUTICAL AND NUTRITIONAL INDUSTRY WITH ITS HIGH RATINGS FOR ACCURACY, EFFICIENCY AND EASE OF USE. STATE-OF-THE-ART ELECTRONIC CONTROLS MAXIMIZE SPEED AND ELIMINATE MISCOUNTS, AND FILLERS EASILY DISMANTLE FOR CLEANING IN 5 MINUTES.



THE WORLD'S FIRST VISION COUNTING MACHINE WITH SINGLE TABLET REJECT. THIS COMPACT FOOTPRINT FILLER USES A HIGH-RESOLUTION COLOUR VISION SYSTEM TO IDENTIFY ROGUE TABLETS AND CAPSULES, INSPECTING SHAPE, COLOUR AND INTEGRITY. ONCE A TABLET HAS BEEN IDENTIFIED AS DEFECTIVE, THE CONTA REMOVES IT FROM THE BATCH BEFORE IT EVEN ENTERS THE BOTTLE.

SLAT COUNTERS

IMA Safe offers a wide range of slat counters to suit any application. GMP design, tool-free changeover and controls incorporating product recipe and changeover module, cleaning and changeover are quick and easy. As the world leader in slat counting, we have successfully designed slats to run all types of product shapes and counts with a very high level of filling efficiency.

TABLETS, CAPSULES, CAPLETS, SOFT GELS,
IRREGULAR SHAPES.



The slat counter is a proven and very robust method of tablet counting. The machine has a number of slats suspended between two chains running on a continuous rotary track. These slats have cavities machined into them to match the profile of a tablet or capsule. As the slats run around the track, they pass under a tablet hopper where tablets fall into the cavities and are then carried to a discharge point. The slats are configured with a specific number of cavities and arranged in a sequence on the machine to produce the required count for the bottle size. They usually fill multiple bottles at the same time and the number and width of slats can vary to accommodate speeds from 50 to 400 bpm.

The counters are also available with a Microscan® empty cavity detection system to ensure that the cavities are filled with tablets to improve count accuracy.

The latest design takes it one step further and incorporates a TruCount® electronic count verification system to detect the product after being discharged from the slat. This ensures that product has discharged from the slat and the count in the bottle is accurate.

FULL RANGE OF SLAT COUNTERS
DESIGNED TO MEET GMP CRITERIA
AND FEATURING QUICK CHANGEOVER,
COUNT VERIFICATION AND COLOUR
TOUCH SCREEN OPERATOR INTERFACE.



SLAT COUNTERS



HYBRID 72/39 (MERRILL®)

Designed to accommodate Lakso® or Merrill® slats.
Available with TruCount® 100% count verification system or
Microscan® III cavity detection system.

SPEED:
UP TO 400 BOTTLES/MINUTE OR MORE
THAN 40,000 PRODUCTS/MINUTE
DEPENDING ON PRODUCT AND BOTTLE
SHAPE AND SIZE.

STANDARD FEATURES

- GMP STAINLESS STEEL BASE WITH POWERED ELEVATION
- SERVO FEEDSCREW BOTTLE INDEXING FOR PRECISE POSITIONING OF BOTTLES
- STATIC ELIMINATION SYSTEM ASSISTS WITH REMOVAL OF STATIC CHARGE FROM PRODUCT AND SLATS
- UPPER ROLL-BACK BRUSH TO KEEP PRODUCT IN THE SLAT FILLING AREA
- INTEGRAL BULK TABLET HOPPER WITH SIFT-FEED FEEDERS TO REMOVE DUST AND CHIPS
- FOUR METHODS OF PRODUCT PURGE
- COLOUR TOUCHSCREEN HMI WITH EASY TO USE RECIPE MODULE
- TOOL-FREE CHANGEOVER
- BOTTLE REJECT STATION.

FILLING FEATURES

- BOTTOM VIBRATION AND SIDE SLAT SHAKERS TO ASSIST WITH PRODUCT FILLING INTO SLAT CAVITIES
- ADJUSTABLE SLOPE FEATURE ALLOWS THE OPTIMUM ANGLE TO BE USED FOR FILLING OF PRODUCTS INTO THE CAVITIES.

OPTIONAL FEATURES

- ZERO-ACCESS SAFETY GUARDING
- DUST EXTRACTION MANIFOLDS.



TRUCOUNT®

The system is comprised of an emitter head and receiver head mounted in the path of the product just above the bottles. It is self-configurable for any slat cavity configurations ensuring that existing slats can be accommodated and most importantly, that the ideal cavity spacing be used to maximize output speed. The product is learned by the system and the parameters stored in

the recipe for easy set-up and changeover. As the product falls through the counting area, the product is scanned, compared to the saved parameters and counted if the parameters are met. Because the product is counted after leaving the cavity and the product path is fully enclosed to the bottle, 100% count accuracy is assured.

SLAT COUNTERS



SL16/SL39

- Designed to use Lakso® or Merrill® 16" and 39" and King SC6 slats
- Available with TruCount® 100% count verification system.

SPEED SL16:

UP TO 180 BOTTLES/MINUTE OR MORE
THAN 18,000 PRODUCTS/MINUTE
DEPENDING ON PRODUCT AND BOTTLE
SHAPE AND SIZE.

SPEED SL39:

UP TO 400 BOTTLES/MINUTE OR MORE
THAN 40,000 PRODUCTS/MINUTE
DEPENDING ON PRODUCT AND BOTTLE
SHAPE AND SIZE.

NEW SLAT COUNTER DESIGNED TO MEET THE DEMAND FOR QUICK AND EASY CLEANING. AVAILABLE WITH OPTIONAL INNOVATIVE REPLACEMENT FILLING HEAD TO DRASTICALLY REDUCE THE CHANGEOVER TIME OF THE MACHINE.

STANDARD FEATURES

- ALL DRIVE AND MECHANICAL COMPONENTS FULLY ENCLOSED IN BASE AND SIDE PANELS FOR IMPROVED SAFETY AND ELIMINATION OF PRODUCT ENTRAPMENT POINTS
- STATIC ELIMINATION SYSTEM ASSISTS WITH REMOVAL OF STATIC CHARGE FROM PRODUCT AND SLATS
- VARIABLE SPEED UPPER ROLL-BACK BRUSH TO KEEP PRODUCT IN THE SLAT FILLING AREA
- INTEGRAL BULK TABLET HOPPER WITH SIFT-FEED FEEDERS TO REMOVE DUST AND CHIPS
- MAIN SLAT SERVO DRIVE FOR PRECISE POSITIONING OF SLATS
- TABLET EJECTION VIBRATOR ELIMINATES THE NEED FOR PIN BARS, THUMPER OR BLADE EJECTION
- COLOUR TOUCHSCREEN HMI WITH EASY TO USE RECIPE MODULE
- TOOL-FREE CHANGEOVER
- POWERED ELEVATION
- SERVO FEEDSCREW BOTTLE INDEXING FOR PRECISE POSITIONING OF BOTTLES
- BOTTLE REJECT STATION.

FILLING FEATURES

- BOTTOM VIBRATION AND GREATLY IMPROVED SIDE VIBRATION TO ASSIST WITH PRODUCT FILLING INTO SLAT CAVITIES
- ADJUSTABLE SLOPE FEATURE ALLOWS THE OPTIMUM ANGLE TO BE USED FOR FILLING OF PRODUCTS INTO THE CAVITIES.

OPTIONAL FEATURES

- ZERO-ACCESS SAFETY GUARDING
- DUST EXTRACTION MANIFOLDS
- CONTAINMENT
- BOTTLE REFILL STATION
- INTERCHANGEABLE HEAD THAT ALLOWS:
- FASTER CHANGEOVER
- CLEANING OF THE HEAD OFFLINE
- LOADING AND REMOVAL OF SLATS PERFORMED OFFLINE
- LOWERING AND TILTING OF TABLET HOPPER FOR EASY REMOVAL AND CLEANING
- 21 CFR PART 11 COMPLIANCE.

ELECTRONIC COUNTERS



Full product range of electronic tablet counters compliant with GMP criteria, quick replacement of product contact parts, advanced and precise electronic counting, PLC control with operator-friendly control systems, colour touchscreen storing up to 1000 product recipes and designed to recall all major machine settings.

These types of counters use a non-product specific means of separating and delivering product to sensors that count the product. The most common form of delivery is a "V" grooved vibratory tray. A typical arrangement consists of a bulk hopper with a vibratory tray beneath it. This vibratory tray moves the product out of the hopper and onto vibratory trays with "V" grooves to guide the tablets into rows and separate the product. The product is then discharged from

the lanes into the counting head where it passes the sensors and is counted. Once the pre-determined count has been reached, the product flow is stopped by gates. The product is then merged from separate lanes into one and is delivered to the container(s). Two types of counting sensors are available. An infrared system, which is very reliable and accurate, however, provides limited detection of broken product. We also offer a unique system that uses an electrostatic field (EFS) to count the product and this gives the added advantage of not being affected by dust and being able to detect levels of broken products and empty capsules. In addition, EFS can detect if more than one product falls simultaneously to further ensure that the count is accurate. Electronic counters are usually in a 12-track configuration and are limited to a maximum speed of about 60 bpm, however they can be arranged in a twin (two fillers) for higher speeds. Recently, we have introduced the Swiftpharm; a new generation of electronic counter that can attain speeds of 120 bpm in a single machine and up to 240 bpm in a twin format.

VISION COUNTERS

The vision counter is based on the vibratory tray method of feeding products to a counting head, however adds the capability of product inspection and rejection of non-conforming product. This inspection and rejection capability is achieved through the use of a vacuum drum that takes the products from the vibratory trays and presents them to a high-resolution colour camera system for inspection of colour, area, perimeter and length. Furthermore, the product can be diverted from the vacuum drum if it is found to be non-conforming.

This same camera system also performs the counting of the product which is then verified by barrier sensors mounted below the vacuum drum assuring highly accurate counts. With an automatic feedback control of the product flow, the machine is easy to set up and can operate without the presence of an operator. The Conta is a truly unique machine that meets the needs for a highly accurate counting machine capable of product inspection and single tablet rejection assuring the highest level of product quality.

DESIGNED TO AVOID
CROSS-CONTAMINATION, THE ONLY
MACHINE AVAILABLE ON THE MARKET THAT
PROVIDES HIGHLY ACCURATE COUNTING
ALONG WITH PRODUCT INSPECTION AND
SINGLE PRODUCT REJECTION.



ELECTRONIC COUNTERS



SWIFTVISION

SPEED: UP TO 60 BPM OR 6,000 PRODUCTS PER MINUTE DEPENDING ON PRODUCT AND BOTTLE SHAPE AND SIZE.

TWIN SWIFTVISION

SPEED: UP TO 120 BPM OR 12,000 PRODUCTS PER MINUTE DEPENDING ON PRODUCT AND BOTTLE SHAPE AND SIZE.



SWIFTVISION

- INFRARED OPTICAL SENSOR OR AS AN OPTION EFS. NO OTHER SIMILAR TECHNOLOGY EXISTS ON THE MARKET THAT CAN RECOGNISE PRODUCT SHAPE THANKS TO MASS CHECK.
- THE DESIGN ALLOWS SAFETY GUARDS WITH CONTAINMENT TO BE INSTALLED
- TOOL-FREE COMPONENTS FOR EASY REPLACEMENT OF PRODUCT CONTACT PARTS
- HMI WITH TOUCHSCREEN COLOUR PANEL
- POSSIBILITY OF STORING UP TO 1000 DIFFERENT SIZES
- BOTTLE REJECTION STATION FOR BOTTLES CONTAINING CHIPPED OR INCORRECTLY SIZED TABLETS
- SWIFTVISION OPTIONS INCLUDE: EFS, COMPLETE SET OF PRODUCT CONTACT PARTS, DISCHARGE NOZZLES TO SUIT BOTTLE SIZE, DUST EXTRACTION, ANTISTATIC BARS.



SPEED:
50 BOTTLES PER MINUTE OR 5,000
PRODUCTS PER MINUTE DEPENDING ON
PRODUCT AND BOTTLE SHAPE AND SIZE.

MONOBLOC MACHINE THAT INCLUDES
THE FUNCTIONS NORMALLY FEATURED
ON TWO MACHINES IN A SINGLE
COMPACT SOLUTION, MAINTAINING
THE SAME PERFORMANCES AS THE
SWIFTVISION OR SWIFTVISION II BUT
WITH INTEGRATION OF THE S95 CAPPER.

- INFRARED OPTICAL SENSOR AS OPTION EFS.
- THE DESIGN ALLOWS SAFETY GUARDS WITH CONTAINMENT TO BE INSTALLED
- TOOL-FREE COMPONENTS FOR EASY REPLACEMENT OF PRODUCT CONTACT PARTS
- COLOUR OPERATOR INTERFACE
- BOTTLE REJECTION STATION FOR BOTTLES CONTAINING CHIPPED OR INCORRECTLY SIZED TABLETS
- MONOPHARM OPTIONS INCLUDE: DUST EXTRACTION, ANTISTATIC BARS, FUNNEL VIBRATION.



MONOPHARM

ELECTRONIC COUNTERS



SWIFTPHARM SPEED:
UP TO 12,000 PRODUCTS/MINUTE OR
120 BOTTLES/MINUTE DEPENDING ON
PRODUCT AND BOTTLE SHAPE AND SIZE.

TWIN SWIFTPHARM SPEED:
UP TO 24,000 PRODUCTS/MINUTE OR
240 BOTTLES/MINUTE DEPENDING ON
PRODUCT AND BOTTLE SHAPE AND SIZE.

TO MEET THE INCREASING MARKET DEMAND FOR INCREASED OUTPUT SPEEDS AND SMALLER FOOTPRINTS, THIS MACHINE HAS BEEN DEVELOPED USING THE CONSOLIDATED TECHNOLOGY APPLIED TO SWIFTVISION MACHINES. THANKS TO THE INTRODUCTION OF SERVO-DRIVEN PRE-COUNTING DEVICES, THIS MACHINE INCREASES THE COUNTING SPEED WHILE KEEPING QUALITY AND ACCURACY UNCHANGED.

- AVAILABLE IN SINGLE OR TWIN HEAD VERSION.
- SUPPLIED WITH INFRARED OPTICAL SENSOR CHECK
- THE DESIGN ALLOWS SAFETY GUARDS WITH CONTAINMENT TO BE INSTALLED
- TOOL-FREE COMPONENTS FOR EASY CHANGEOVER
- NO PNEUMATIC DEVICES
- COLOUR OPERATOR INTERFACE
- BOTTLE REJECTION STATION FOR BOTTLES CONTAINING CHIPPED OR INCORRECTLY SIZED TABLETS
- 21CFR PART 11 COMPLIANCE
- SWIFTPHARM OPTIONS INCLUDE: EFS, DUST EXTRACTION, ANTISTATIC BARS



SWIFTPHARM



SPEED:
UP TO 150 BOTTLES PER MINUTE.

DESIGNED TO INCORPORATE MULTIPLE MACHINES INTO ONE COMPACT SYSTEM

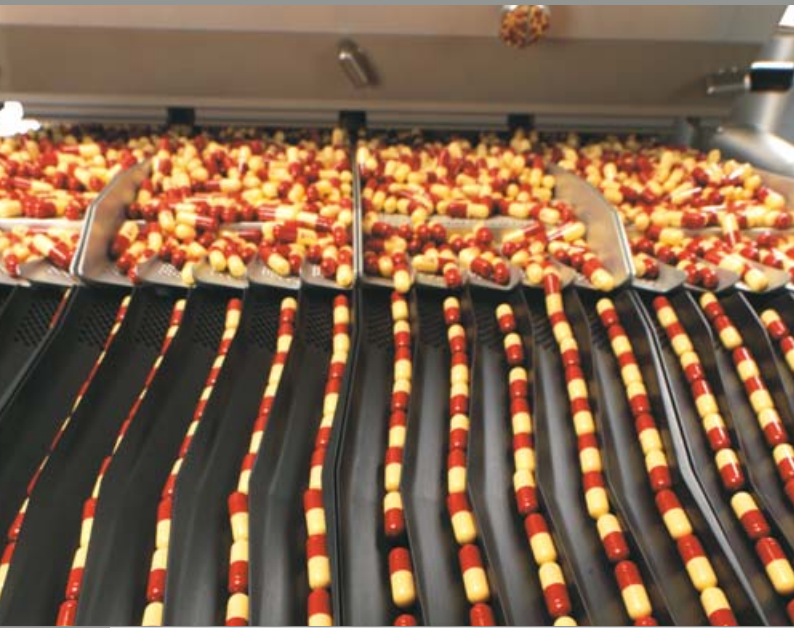
THE UNILINE INCORPORATES ALL OF THE NECESSARY OPERATIONS OF A COUNTING LINE: OPERATIONS INCLUDE:

- LOADING OF CONTAINERS INTO THE SYSTEM
- DESICCANT INSERTION (OPTIONAL)
- POSITIVE CONVEYING OF CONTAINERS
- FILLING OF CONTAINERS
- COTTONER (OPTIONAL)
- CAPPING STATION
- CODING STATION (OPTIONAL)
- REJECT STATION WITH 1 OR 2 POSITIONS
- TRANSFER OF CONTAINERS FROM THE SYSTEM
- THE CONTAINER IS POSITIVELY HELD AND CONTROLLED THROUGHOUT THE PROCESS
- NO SIZE PARTS FOR BOTTLE TRANSPORT WITH ELECTRONIC CHANGEOVER FOR BOTTLE DIAMETER
- BALCONY STYLE DESIGN
- VERY SMALL FOOTPRINT
- CONTAINMENT FOR THE WHOLE PROCESS (OPTIONAL).



UNILINE

VISION COUNTERS



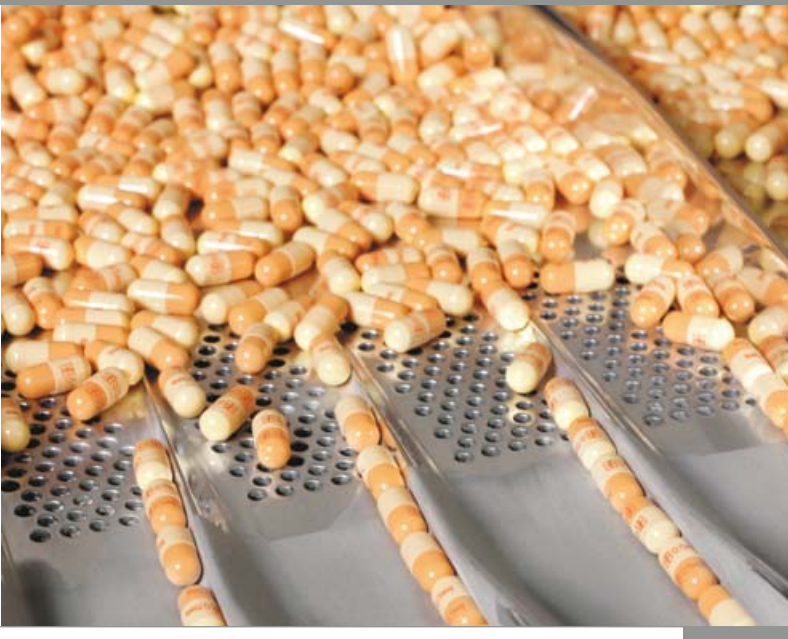
SPEED:
UP TO 6,000 PRODUCTS/MINUTE OR
150 BOTTLES/MINUTE DEPENDING ON
PRODUCT AND BOTTLE SHAPE AND SIZE.

DESIGNED TO AVOID CROSS-
CONTAMINATION, THIS IS THE ONLY
MACHINE AVAILABLE ON THE MARKET
THAT PROVIDES HIGHLY ACCURATE
COUNTING ALONG WITH PRODUCT
INSPECTION AND SINGLE PRODUCT
REJECTION.



CONTA 150

- PRODUCT INTEGRITY CHECK: AREA, PERIMETER, LENGTH AND COLOUR (ONE SIDE), BY COLOUR VISION SYSTEM
- SINGLE TABLET REJECTION OF IMPERFECT TABLETS BEFORE FILLING THE BOTTLE
- COUNTING ACCURACY GUARANTEED USING A HIGH-RESOLUTION LINEAR CAMERA SYSTEM AND DOUBLE CHECK VERIFICATION ON THE COUNTING
- AUTOMATIC SPEED FEEDBACK CONTROL (NO OPERATOR REQUIRED)
- LIMITED NUMBER OF CHANGE PARTS REQUIRED WITH MOST TABLETS/CAPSULES
- BOTTLE REJECTION STATION
- TOOL-FREE RELEASE OF PRODUCT CONTACT PARTS AND SIZE PARTS FOR QUICK AND EASY CLEANING
- COLOUR TOUCHSCREEN HMI
- EASY CLEANING AND FULLY COMPLIANT TO cGMP REGULATIONS
- COMPACT AND ERGONOMIC FOOTPRINT
- AUTOMATIC ADJUSTMENT OF FILLING HEIGHT
- CONTA C150 OPTIONS INCLUDE: 21 CFR PART 11 COMPLIANCE; MACHINE CONTAINMENT, ANTISTATIC BARS; FUNNEL VIBRATION.



SPEED:
UP TO 12,000 PRODUCTS/MIN OR
300 BOTTLES/MINUTE DEPENDING ON
PRODUCT AND BOTTLE SHAPE AND SIZE.

- PRODUCT INTEGRITY CHECK: AREA, PERIMETER, LENGTH AND COLOUR (ONE SIDE), BY COLOUR VISION SYSTEM
- SINGLE TABLET REJECTION OF IMPERFECT TABLETS BEFORE FILLING THE BOTTLE
- COUNTING ACCURACY GUARANTEED USING A HIGH-RESOLUTION LINEAR CAMERA SYSTEM AND DOUBLE CHECK VERIFICATION ON THE COUNTING
- AUTOMATIC SPEED FEEDBACK CONTROL (NO OPERATOR REQUIRED)
- VERY LIMITED NUMBER OF CHANGE PARTS REQUIRED WITH MOST TABLETS/CAPSULES
- BOTTLE REJECTION STATION
- TOOL-FREE RELEASE OF PRODUCT CONTACT PARTS AND SIZE PARTS FOR QUICK AND EASY CLEANING
- COLOUR TOUCHSCREEN HMI
- EASY CLEANING AND FULLY COMPLIANT TO cGMP REGULATIONS
- COMPACT AND ERGONOMIC FOOTPRINT
- AUTOMATIC ADJUSTMENT OF FILLING HEIGHT
- CONTA C300 OPTIONS INCLUDE: 21 CFR PART 11 COMPLIANCE; MACHINE CONTAINMENT, ANTISTATIC BARS; FUNNEL VIBRATION.



CONTA 300

COMPLETE SOLUTIONS

Production lines can be integrated at IMA Safe in Italy, IMA Safe Swiftpack in UK or at IMA North America in USA, depending on customer requirements always to the same high standard with regard to Pre FAT and FAT test procedures.

ONLY ONE SUPPLIER FOR YOUR HIGHLY EFFICIENT COUNTING LINES.

Pharmaceutical companies demand complete lines engineered and delivered by one general supplier.

IMA is aware of this need and can offer complete lines under its own responsibility.





IMA Safe offers the most comprehensive range of primary and secondary packaging machines available on the market today, no other supplier has such an extensive product catalogue.

Individual counters or complete lines are available to cater to the customer's specific production requirements.

IMA Safe handles all stages of line implementation, including coordination of layouts, engineering, utility distribution, design to specific customer requirements, project management, coordination of any preliminary count tests, defining correct combination of machine models, creation of line specifications and consequent line offers, coordination of running of tests with customer (pre FAT, FAT), coordination of installation activities, validation services, training, inspections required for final fulfilment of production requirements.

In addition to engineering activities, IMA Safe also offers: testing rooms for count tests with customers for particularly awkwardly shaped products.

STAND ALONE MACHINES

COMPLETE LINES

CUSTOMIZED DESIGN

PROJECT MANAGEMENT

FUNCTIONAL & PERFORMANCE

TESTS

VALIDATION SERVICE

F.A.T.

TRAINING

MACHINES FOR COMPLETE LINE SET-UP



DIFFERENT UNSCRAMBLER MODELS ARE AVAILABLE, ROTARY OR LINEAR, TO MEET ALL BOTTLE ORIENTATION REQUIREMENTS ACCORDING TO THE AVAILABLE SPEED AND SPACE.

- BOTTLE ORIENTATION IS GUARANTEED BY SPECIFIC DEVICES
- RAPID SIZE CHANGEOVER
- EASY ACCESSIBILITY AND EASE OF USE
- SPEED: UP TO 300 BOTTLES/MIN.

A FULL RANGE OF MACHINES ARE AVAILABLE TO COMPLETE YOUR COUNTING LINES.



HIGH SPEED BOTTLE UNSCRAMBLER

ESSENTIAL FOR GUARANTEEING BOTTLE CLEANLINESS BEFORE FILLING; LINEAR AND CONTINUOUS MOTION MODELS ARE AVAILABLE, WITH COMPLETE BOTTLE TIP-OVER, DESIGNED TO PROCESS ANY KIND OF BOTTLE.

- QUICK SIZE CHANGEOVER
- EASILY INTEGRATED INTO VARIOUS LINE LAYOUTS THANKS TO COMPACT SIZE.

BOTTLE BLOWER SERIES

IN ORDER TO KEEP THE COUNTING MACHINE HOPPER FILLED IN THE RIGHT LEVEL, IMA CAN OFFER A TABLET ELEVATOR THAT CAN BE EASILY LINKED TO IMA COUNTING MACHINES. IMA CAN OFFER A VARIETY OF SOLUTIONS CATERING TO LOGISTICS REQUIREMENTS AND CHARACTERISTICS OF THE PRODUCT TO BE PROCESSED:

- PRODUCT CONTAINER
- HERCULES 150- 300-MIDI-MAXI BIN ELEVATORS.
- DISCHARGE VALVES FROM THE SIMPLEST FULLY DISMOUNTABLE TO TWIN VALVES SUITABLE FOR DISCHARGING PRODUCTS THAT REQUIRE CONTAINMENT SOLUTIONS.
- T-MAIL PRODUCT CONVEYORS “IN SEALED BULLETS”
- GREY AND BLACK AREA CROSSING WITHOUT CONTAMINATION OF THE PRODUCT/ ENVIRONMENT.
- SWIFTLIFT PRODUCT ELEVATORS THAT PICK UP PRODUCT FROM A 100 L HOPPER INSTALLED ON THE GROUND AND MOVE IT EXTREMELY GENTLY TO THE COUNTER’S HOPPER.



TABLET ELEVATOR SERIES

- FULL AUTOMATIC cGMP MACHINES FOR INSERTION OF COTTON OR SYNTHETIC MATERIALS
- THE MACHINE GUARANTEES PRECISION CUTTING AND INSERTION OF REQUIRED COTTON LENGTHS.
- THE CUTTING SYSTEM AVOIDS STRAY WISPS OF COTTON.
- DIFFERENT MODELS AVAILABLE
- PLC CONTROL AND COLOUR TOUCHSCREEN
- OUTPUT UP TO 300 BOTTLES/MIN.



COTTONER SERIES

MACHINES FOR COMPLETE LINE SET-UP



USED TO TRANSFER CAPS FROM OPERATOR LOADING LEVEL TO BOWL FEEDER.

CAP AND CONTAINER ELEVATORS

EXTENSIVE RANGE OF SOLUTIONS AND MACHINE MODELS: S95 (INTERMITTENT CAPPER), ROTARY CAPPER AND OTHERS MODELS ARE AVAILABLE, FROM SEMI-AUTOMATIC TO FULLY AUTOMATIC MACHINES WITH CONTROLLED CLOSURE FORCE APPLIED TO EACH CAP.

- ERGONOMIC DESIGN
- SMALL FOOTPRINT
- SPECIAL DEVICES FOR THE APPLICATION OF CHILD RESISTANT CAPS (CRC) AND INDUCTION-SEALED CLOSURES WHERE CLOSURE FORCE IS OF CRITICAL IMPORTANCE.
- GMP DESIGN
- QUICK CHANGEOVER
- SPEED UP TO 240 BOTTLES/MIN

RANGE OF MACHINES DESIGNED FOR CANISTER-TYPE DESICCANTS.

- EASY CLEANING AND SIZE CHANGEOVER
- SIMPLE TO USE
- COMPACT FOOTPRINT
- ELECTRONIC CONTROLLED
- DIFFERENT OPTIONS AVAILABLE.

DESSICANT INSERTER SERIES



INTERMITTENT AND ROTARY CAPPERS

IN ADDITION:

- LABELLING MACHINES MADE ENTIRELY OF STAINLESS STEEL FOR ANY BOTTLE SHAPE: OVAL, RECTANGULAR, OR UNUSUAL SHAPES
- TROLLEYS FOR CARRYING PRODUCT CONTACT PARTS FOR EASY CLEANING
- PRODUCT AND BOTTLE INSPECTION STATIONS

- QUALITY CHECK POINT STATIONS
- INDUCTION SEALERS
- CHECKWEIGHERS
- CARTONING MACHINES FROM 60 TO 400 BOTTLES PER MINUTE
- WRAPPING MACHINES
- TRAY PACKERS
- CASE-PACKING MACHINES
- PALLETIZERS

- BENCH TOP COUNTERS FOR:
LABORATORIES, QUALITY CONTROL DEPTS, PHARMACIES, DRUG DISTRIBUTION CENTRES, DISTRIBUTORS AND HOSPITALS:
- SWIFTCHECK
 - SWIFTCOUNT
 - DISPENSA
 - EKC

A VARIETY OF ROTARY TABLES ARE AVAILABLE ACCORDING TO THE EXISTING SPACE CONVEYORS WITH SAFE DISTRIBUTION OF ELECTRIC CURRENT AND PNEUMATIC AIR TO THE ENTIRE LINE AND COLLECTION OF SIGNALS FROM EACH MACHINE IN ORDER TO CONVEY EVERYTHING TO A SINGLE POINT, ARE AVAILABLE. BOTTLE TRANSFER CONVEYORS ARE CREATED FOR DIFFERENT LINE CONFIGURATIONS AND DESIGNED TO ASSEMBLE THE VARIOUS CHECK DEVICES. ALL MADE OF GMP DESIGN STAINLESS STEEL.

SOLUTIONS FOR ALL YOUR NEEDS IN TABLET COUNTING LINES.

TORQUIT MODEL CAN BE USED FOR RETORQUING AFTER INDUCTION SEALING.

- GRADUATED SLIP CLUTCH WITHOUT TOOLS
- PLC CONTROL
- GMP DESIGN
- EASY TO USE.

ROTARY TABLES, CONVEYORS

CAP RETORQUER

IMA TECHNICAL ASSISTANCE

IMA UNDERSTANDS
THE NEED FOR
EXCELLENT SERVICE
AROUND THE WORLD



The use of original spare parts since they are essential to guaranteeing perfect machine working order over time, full production efficiency and life cycle duration.

Spare parts can be ordered from IMA directly or alternatively via the MyIMA e-commerce system and shipped to you within 24-36 hours.

- PRESENT IN OVER 70 COUNTRIES
- 10 BRANCHES PROVIDING SALES AND SERVICE
- MORE THAN 50 REPRESENTING AGENCIES
- 90 TECHNICIANS FROM ITALY SUPPLYING WORLDWIDE SERVICE
- 50 TECHNICIANS FROM LOCAL SUBSIDIARIES AND AGENCIES
- 11 AFTER SALES SUPERVISORS

IMA Safe provides prompt and effective technical assistance which covers the entire life cycle of its equipment. This assistance is provided by a dedicated team of experts able to meet our client's needs on a day to day basis. A customer oriented after sales service staff is what distinguishes IMA from the rest of the world.



TRAINING LEARNING HOW TO MAKE THE DIFFERENCE

ADVANTAGES

- INCREASE EFFICIENCY
- SHORTER CHANGEOVER TIME
- FASTER ERROR ANALYSIS
- PREVENTATIVE MAINTENANCE



IMA SAFE ORGANIZES SPECIFIC TRAINING PROGRAMS WHICH GIVES OPERATORS AN IN DEPTH KNOWLEDGE OF THE SYSTEMS WHICH WILL BE INSTALLED. THIS SCHOOL CENTER PROVIDES BOTH CLASS ROOM AND DIRECT TRAINING ON MACHINES AND COVERS MACHINE DESIGN AND FUNCTIONS, SIZE CHANGEOVER AND MAINTENANCE, MACHINE START-UP, TROUBLESHOOTING, CLEANING PROCEDURES, QUALITY CHECKS AND OTHER FUNCTIONS.



IMA SAFE IN THE WORLD OF COUNTING



IMA SAFE DIVISION

PACKAGING SOLUTIONS

Via I° Maggio, 14 - 40064 Ozzano Emilia

(Bologna) - Italy

Tel. +39 051 6514111 - Fax +39 051 6414743

mtkg.packaging@ima.it

www.ima-pharma.com



IMA NORTH AMERICA Inc.

7 New Lancaster Road, Leominster, MA

USA 01453

Tel. +1 978 537 8534

Toll-Free 800 851 1518

Fax +1 978 840 0730

sales@imausa.net

www.imanova.com



SWIFTPACK AUTOMATION Ltd.

Swiftpack House, 3 Arden Road, Alcester,

Warwickshire B49 6HN - United Kingdom

Tel. +44 0 1789 400880

Fax +44 0 1789 400780

sales@imaswiftpack.com

www.imaswiftpack.com

FOR INFORMATION ON THE IMA SUBSIDIARIES AND SALES OFFICES, VISIT OUR WEBSITE:

WWW.IMA-PHARMA.COM (CONTACTS SECTION)

IMA SUBSIDIARIES & SALES OFFICES

UNITED KINGDOM

IMA UK LTD.

3 Arden Road

Arden Forest Industrial Estate

Alcester - Warwickshire B49 6HN - UK

Tel: +44 (0) 1789 767330

Fax: +44 (0) 1789 400780

hotdesk@imauk.co.uk

FRANCE

IMA FRANCE E.U.R.L.

77-79 Avenue Victor Hugo

92500 Rueil-Malmaison - France

Tel. +33 (01) 41399800

Fax +33 (01) 47323180

ima.france@fr.ima.it

GERMANY

IMA GERMANY GMBH

Scarletallee 11

D-50735 Köln - Germany

Tel. +49 (0221) 7174500

Fax +49 (0221) 7174501

info@de.ima.it

CENTRAL AND EASTERN EUROPE

I.M.A. EST VERPACKUNGSSYSTEME

HANDELSGESELLSCHAFT GMBH

Friedlgasse 12/1 - A 1190 Wien - Austria

Tel. +43 (1) 3690636

Fax +43 (1) 3699945

(Offices in Bucharest, Moscow,

Prague and Warsaw)

imaest@utanet.at

ITALY

IMA ITALY SALES OFFICE

Via I Maggio 14

40064 Ozzano dell'Emilia (Bologna) Italy

Tel. +39 051 6514111

Fax +39 051 6514743

venditeitalia@ima.it

U.S.A., CANADA AND PUERTO RICO

IMA NORTH AMERICA, INC.

7 New Lancaster Road, Leominster,

MA USA 01453

Tel. +1 978 537 8534

Toll-Free 800 851 1518

Fax +1 978 840 0730

sales@imausa.net

CENTRAL AND SOUTH AMERICA

IMAUTOMATICHE MAQUINAS DE

EMBALAGENS LDA.

Rua da Cooperativa Agricola do Funchal

Bloco D/2° andar sala G

9050 Funchal (Madeira) - Portugal

Adm. office Tel. +351 (291) 241111

Sales office Italy +351 051 6514111

SPAIN

IMA IBERICA PROCESSING AND

PACKAGING SL

c/ Font Santa, 46 4° D

08970 Sant Joan D'Espi - Spain

Tel. +34 (93) 4335117

Fax +34 (93) 4335118

imaiberica@es.ima.it

SOUTH EAST ASIA AND OCEANIA

IMA PACIFIC CO. LTD.

All Seasons Place, 12th Floor,

M.Thai Tower, 87 Wireless Road,

Khwaeng Lumpini, Khet Pathumwan,

Bangkok 10330, Thailand

Tel. +66 (0) 2 654 0780 /1

Fax +66 (0) 2 654 0782

ima@imapacific.com

CHINA

IMA PACKAGING & PROCESSING

EQUIPMENT CO. LTD.

711, Tower B, Huixin Plaza No. 8 Beisihuan

Zhong Road - Beijing 100101 - P.R. China

Tel. +86 (10) 84986663

Fax +86 (10) 84971811

general@imabeijing.com

SHANGHAI OFFICE

Rm 2006, HongKong Plaza

No. 283 HuaiHai (M) Road - 200021

Shanghai- P.R. China

Tel. +86 (21) 63906101/2

Fax +86 (21) 63906103

general@imashanghai.com

EXPORT SALES OFFICES

IMA INDUSTRIA MACCHINE

AUTOMATICHE S.P.A.

Via I Maggio, 14-16

40064 Ozzano dell'Emilia (Bologna) - Italy

Tel. +39 051 6514111 - Fax +39 051 799330

exportagpharma@ima.it

www.ima-pharma.com

IMA S.p.A.

IMA SAFE division

Via I Maggio 14/16 - 40064 Ozzano dell'Emilia (Bologna) - Italy

Tel. +39 051 6514111 - Fax +39 051 6514743

mktg.packaging@ima.it - www.ima.it



Certificate
N. IT00/0415