

## ▼ 7.6/01

### Valve Type MC

Patented stainless steel disk valve  
in compact design, massive clamp closing  
with bracket for assembling of hand lever  
or actuator be assembled without tools



7.6/01

#### ▼ 7.6

##### ① Flange

- with welding collar
- low height
- easy to clean

#### ▼ 7.6

##### ② Sealing

- in food grade quality
- exchangeable
- sterilizable

#### ▼ 7.6

##### ③ Disk

- with king pin
- easy to clean
- exchangeable

#### ▼ 7.6

##### ④ Clamping device

- as an axle bearing
- for flange connection

#### ▼ 7.6

##### ⑤ Flange

- with welding collar
- low height
- easy to clean

#### ▼ 7.6

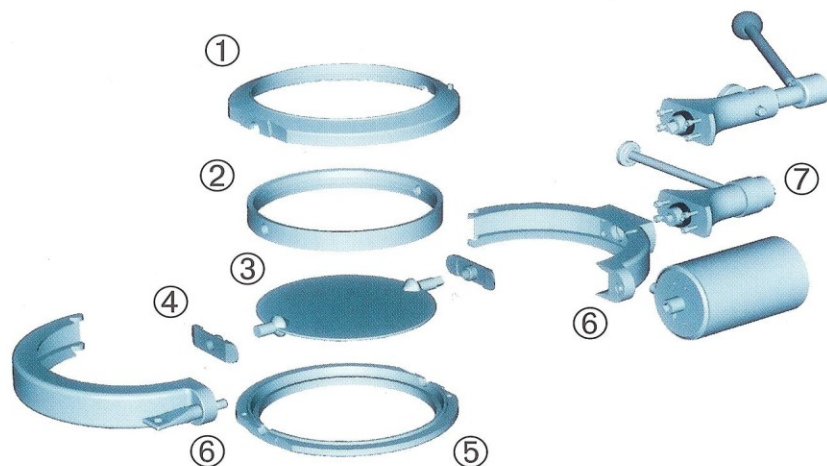
##### ⑥ Clamp

- with hinge, closing  
and driving bracket
- massive

#### ▼ 7.6

##### ⑦ Actuator

- manual
- pneumatic
- continuously adjustable
- sealable
- locked on final position







## Valve Type MC

7.6/01 ▼

### Material:

**Flange made of stainless steel AISI 316 LC**

**Disk made of stainless steel AISI 316 Ti**

**Clamp made of stainless steel AISI 316**

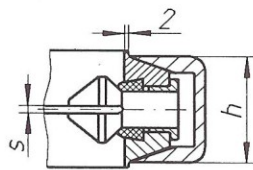
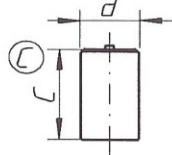
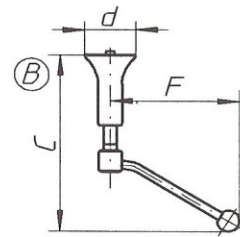
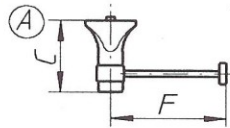
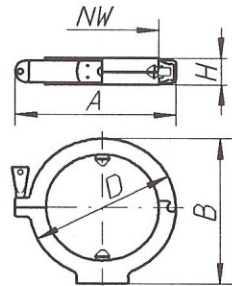
**Sealing made of silicone food grade quality**

**Closing made of plastics PES**

### Surface:

**All parts superfinished and calendered**

**Disk polished and brushed to a 320 grit**



	D	A	B	H	C	F	d	h	s	G	ART. NR.	NW	L*		
<b>Valve</b>	160	186	172	44						4,0	0101515	100	●		
	210	236	221	44						5,6	0101508	150	●		
	260	286	273	44						7,3	0101509	200	●		
	310	336	324	44						9,1	0101510	250	●		
	360	387	375	50						13,2	0101511	300	●		
<b>Actuator</b>	Hand lever straight typ A				136	220	90,0	42		2,2	0101512	100-250	●		
	Hand lever extended typ B				366	280	90,0	42		2,9	0101190	100-250	●		
	Pneumatic actuator typ C				170		101,6			4,0	0101514	100-250	●		
	Pneumatic actuator position scanner typ C				240		133,0			8,2	0101212	300	●		
	Pneumatic actuator position scanner typ C				282		101,6			5,6	0101192	100-250	●		
<b>Spare- and working parts</b>	Sealing silicon										0101213	100	●		
											0101214	150	●		
											0101215	200	●		
											0101216	250	●		
											0101217	300	●		
	Sealing EPDM										0101218	100	●		
											0101219	150	●		
											0101220	200	●		
											0101272	250	●		
											0101273	300	●		
	Sealing PTFE										0101274	100	●		
											0101275	150	●		
											0101276	200	●		
											0101277	250	●		
											0101278	300	●		
	Standard disk														
												3	0,3	0101279	100
											3	0,6	0101280	150	●
											3	0,9	0101281	200	●
											3	1,3	0101282	250	●
											6	3,6	0101283	300	●
Dragee disk													0101284	150	●
Screw plug													0101285	100-300	●
Clamping device													0101286	150-250	●
													0101287	300	●
													0101288	100	●

D = outside diameter clamp, A = clamp diameter incl. locking, B = clamp diameter without Actuator, H = valve height, C = actuator height, F = hand lever height, d = actuator diameter, h = clamp height, s = disk thickness, G = weight in kg, NW = nominal diameter valve, L● = available from stock, LO = to be preferred